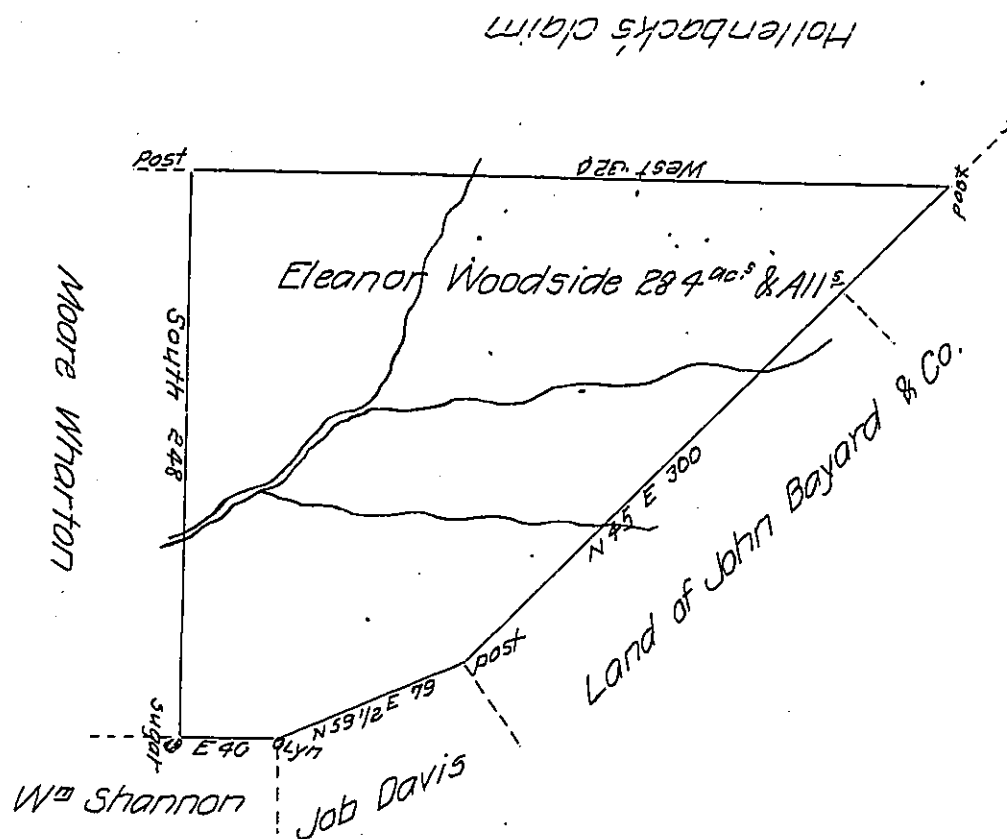


✓



By Virtue of a Warrant dated 23<sup>d</sup> December 1793 Surveyed the 15<sup>th</sup> of March  
 1794 Unto Eleanor Woodside the above described Tract of Two hundred and  
 eighty four Acres of land & Allowance Situated on the head branch of the  
 East Branch of fishing creek in Luzerne County

To Daniel Brodhead Esq.  
 Surv<sup>r</sup> Gen<sup>l</sup> of Pensylva<sup>a</sup>

By W<sup>m</sup> Montgomery D<sup>y</sup> S<sup>r</sup>

Now Ross Township Luz<sup>z</sup> Co.

IN TESTIMONY that the above is a copy of the original remaining on file in  
 the Department of Internal Affairs of Pennsylvania, made  
 conformably to an Act of Assembly approved the 16th day of  
 February, 1833, I have hereunto set my Hand and caused  
 the Seal of said Department to be affixed at Harrisburg,  
 this Fifteenth day of July 1907

*Henry Houch*  
 Secretary of Internal Affairs.